

**VS24**

**FEATURES**

Rigorously tested for decades of use

Exceptional support from our Customer Care team in Madison

Chamber vacuum seal liquids and fragile foods

Pair with Wolf ovens or steamer module for easy meal prep

Stainless, black glass, or custom panel options in 24" or 30" widths

Seal wine and other rigid containers with included accessory

**ACCESSORIES**

24" Black Glass Front Panel

24" Stainless Front Panel

30" Black Glass Front Panel

30" Stainless Front Panel

Integrated Front Panel

Large Bags - 9 1/2" x 13 5/8"

Small Bags - 7 1/4" x 10 3/8"

Wine Stoppers

Accessories available through an authorized dealer.

For local dealer information, visit [subzero-wolf.com/locator](http://subzero-wolf.com/locator).



**FRONT PANEL OPTIONS**



24" DRAWER FRONT STAINLESS PANEL



30" DRAWER FRONT STAINLESS PANEL



24" DRAWER FRONT BLACK PANEL



30" DRAWER FRONT BLACK PANEL

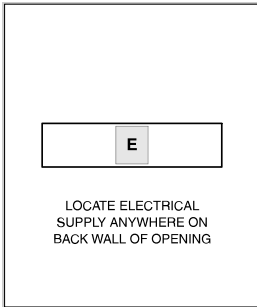


CUSTOM PANEL  
*Integrated Front Panel Kit Required*

**PRODUCT SPECIFICATIONS**

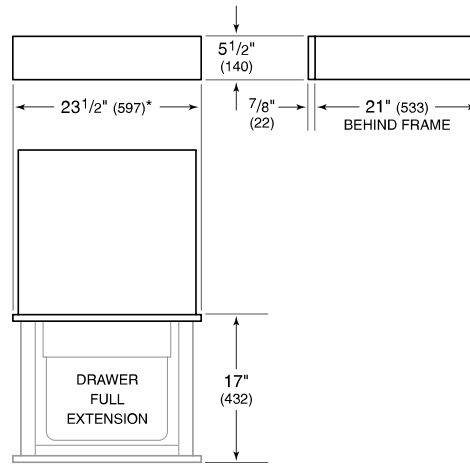
Model	VS24
Capacity	0.25 cu. ft.
Electrical Supply	3-prong grounding-type
Electrical Service	10 amp dedicated circuit
Power Cord Length	3 Feet
Receptacle	3-prong grounding-type

**ELECTRICAL**



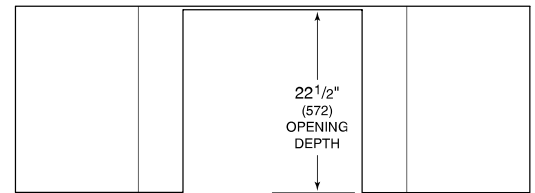
**NOTE:** Dimensions in parenthesis are in millimeters unless otherwise specified

**DIMENSIONS**

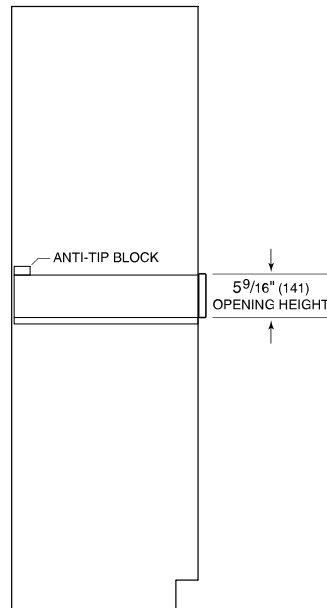


*\*29 7/8" (759) width for 30" panel.*

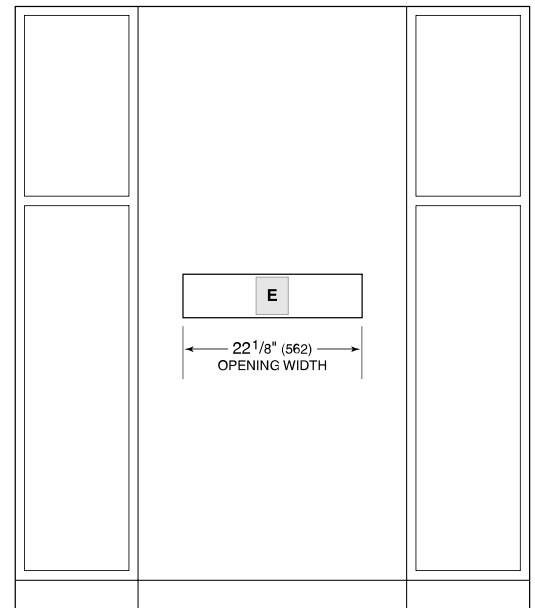
**STANDARD INSTALLATION**



TOP VIEW



SIDE VIEW



FRONT VIEW