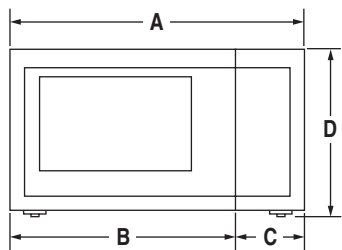


BUILT-IN/COUNTERTOP MICROWAVE OVEN WITH CONVECTION

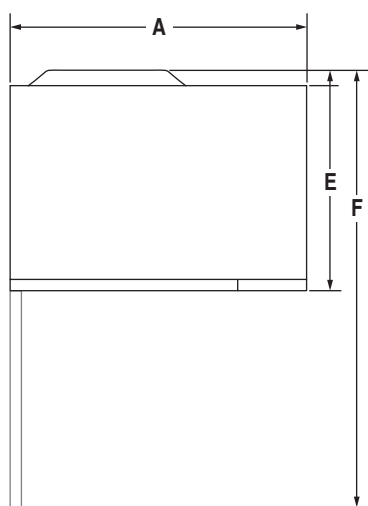
JM C3215BS – 21³/₄" x 12¹³/₁₆" x 20¹/₁₆"

PRODUCT DIMENSIONS

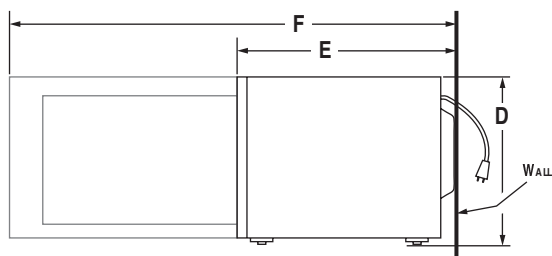


FRONT VIEW

MODEL #		JM C3215BS	
		in	cm
A	Overall width	21 ³ / ₄	55.3
B	Width of door	17 ³ / ₄	45.1
C	Width of control panel	4	10.2
D	Overall height	12 ¹³ / ₁₆	32.6
E	Overall depth with door	20 ¹ / ₁₆	51.0
F	Depth with door open 90°	36 ¹¹ / ₁₆	93.2



TOP VIEW

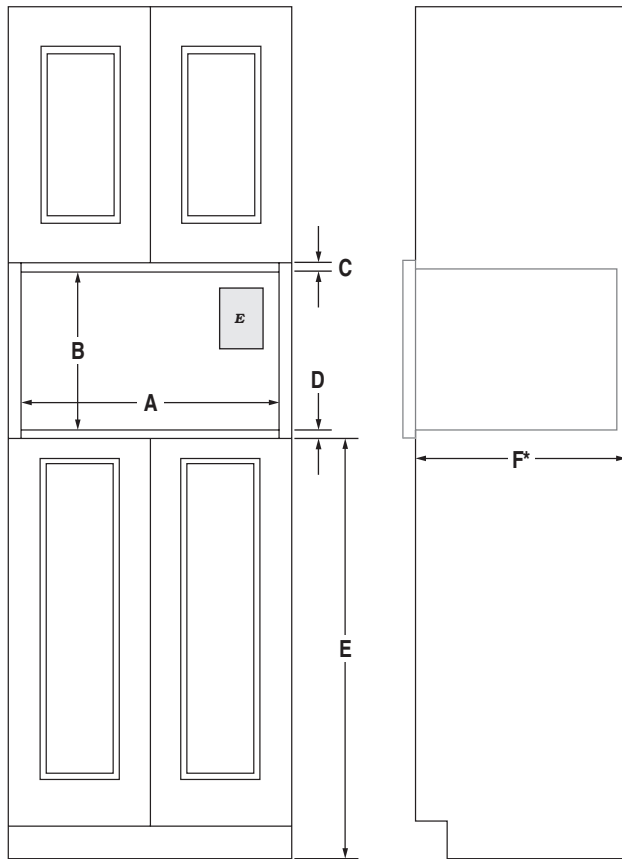


SIDE VIEW

BUILT-IN/COUNTERTOP MICROWAVE OVEN WITH CONVECTION

JM C3215BS – 21³/₄" x 12¹³/₁₆" x 20¹/₁₆"

OPENING/CLEARANCE DIMENSIONS



FRONT VIEW

SIDE VIEW

MODEL #		JM C3215BS	
		in	cm
A	Width of cutout	23 ¹ / ₈	58.7
B	Height of cutout (min.-max.)	17- 17 ¹ / ₈	43.2- 43.5
C	Top of cutout to bottom of upper cabinet (min.)	2	5.1
D	Bottom of cutout to top of single oven (min.)	3	7.6
	Bottom of cutout to top of cabinet door (min.)	1 ⁹ / ₁₆	4.0
E	Recommended height from bottom of cutout to floor	36	91.4
F*	Depth of cutout	18- 22 ¹ / ₂	45.7- 57.2
E	Recommended electrical connection location		

* Depth requirements depend upon receptacle and its location within or outside of recommended region. See installation guide for more details.
NOTE: Trim kit frame extends 1¹/₈" (2.7 cm) above and below the cutout opening.

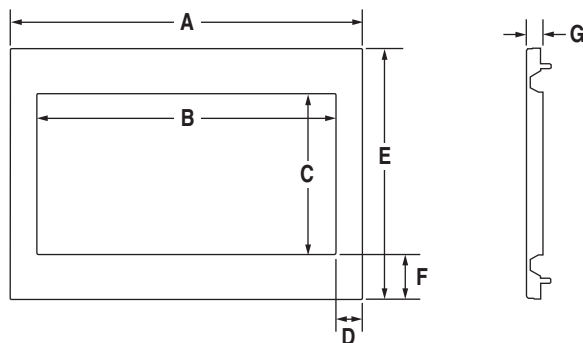
ELECTRICAL REQUIREMENTS

120 volt, 60 Hz, AC only, 15- or 20-amp fused, electrical supply is required. A time-delay fuse or dedicated circuit is recommended. Minimum length of power cord is 30" (76.2 cm). Do not use an extension cord.

VENTING REQUIREMENTS

If microwave oven is built in, a trim kit is required for proper ventilation.

TRIM KIT DIMENSIONS



		M KC2150AS		M KC2157AS	
		in	cm	in	cm
A	Overall width	29 ³ / ₄	75.6	26 ⁷ / ₈	68.2
B	Width of opening	22 ³ / ₄	57.8	22 ³ / ₄	57.8
C	Height of opening	12 ¹ / ₄	31.1	12 ¹ / ₄	31.1
D	Width of frame	3 ¹ / ₂	8.9	2 ¹ / ₁₆	5.2
E	Overall height	19 ¹ / ₈	48.6	19 ¹ / ₈	48.6
F	Height of frame	3 ⁷ / ₁₆	8.7	3 ⁷ / ₁₆	8.7
G	Depth of frame	1 ³ / ₁₆	3.0	1 ³ / ₁₆	3.0