

UC - 15 I**FEATURES**

- _____ Rigorously tested to ensure decades of use
- _____ Exceptional support from Madison, WI-based Customer Care team
- _____ Produces up to 50 lbs. of ice per day
- _____ Produces ice in temperatures up to 100° F
- _____ Two, four and eight-hour delay feature
- _____ Clean and change filter indicator light
- _____ Water-filtration system reduces contaminants, chlorine taste and odor
- _____ Built-in ice scoop

ACCESSORIES

- _____ 15" Stainless Door Panel with Pro Handle
- _____ 15" Stainless Door Panel with Tubular Handle
- _____ 15" to 18" Filler
- _____ 18" Stainless Door Panel with Tubular Handle
- _____ Cleaner For Undercounter Ice Maker
- _____ Filter For Undercounter Ice Maker
- _____ Ice Machine 18" Stainless Door Panel with Pro Handle
- _____ Sanitizer For Undercounter Ice Maker
- _____ Stainless Steel Kickplate
- _____ Stainless Steel Pro Handles
- _____ Stainless Steel Tubular Handles

Accessories are available through an authorized dealer.
For local dealer information, visit subzero-wolf.com/locator.

**HANDLE ACCESSORIES**

PRO



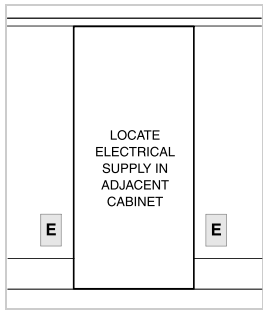
TUBULAR



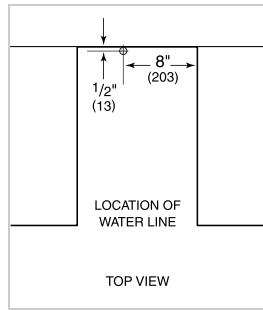
PRODUCT SPECIFICATIONS

Model	UC-151
Dimensions	14 3/4"W x 33 5/8"H x 23"D
Door Clearance	18"
Weight	117 lbs
Electrical Supply	115 VAC, 60 Hz
Electrical Service	15 amp dedicated circuit
Receptacle	3-prong grounding-type

ELECTRICAL

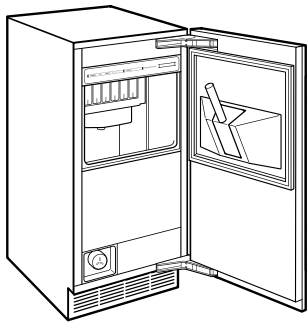


PLUMBING



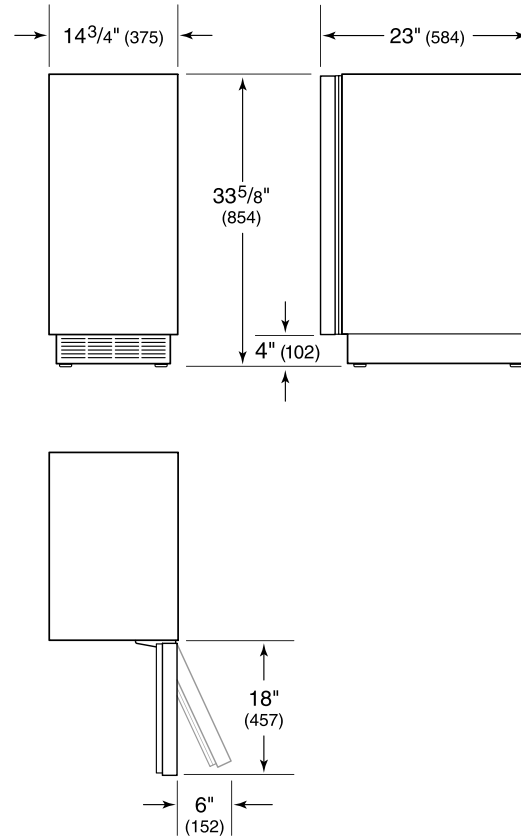
NOTE: Dimensions in parenthesis are in millimeters unless otherwise specified

INTERIOR VIEW

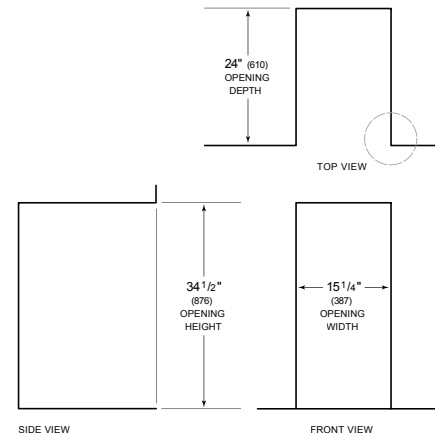


This illustration is intended for interior reference only and may not represent the exterior of the model being specified.

DIMENSIONS



STANDARD INSTALLATION



NOTE: 3 1/2" (89) finished returns will be visible and should be finished to match cabin

