

# COMBI9-6

24" 2-In-2 Front Load Combination Washer / Dryer



## Signature Features

### Wash & Dry Your Clothes In One Cycle

Unique washer and dryer combo designed to give you more free time. Load the machine, set to wash + dry, and come back to clean, dry clothes.

### Quiet Washing Anytime, Any Place

Get your laundry done without disturbing anyone at any time and in any place.

### Delay Timer

Delay timer lets you set the washing machine to start your wash automatically at a later time, choosing a delay of between 10 minutes to 24 hours. The hour displayed indicates the time the wash will finish

## Features

- 9 Kg Washing Capacity
- 6 Kg Drying Capacity
- Condensation Dryer Technology
- 1,400 RPM Spin Speed
- Water Consumption: 112L / cycle
- Energy Consumption: 6.12kWh / cycle
- Universal Motor With DC Drive
- Cold Water Intake
- 60 L Drum Volume
- Full Graphic LCD Display
- 3D Load Sensor
- Active Jet® Washing System
- Delay Timer & Finish Timer
- Memory for favorite program and options store
- Progress Indicator
- Noise levels:
  - o Wash – 58 dBA
  - o Spin – 77 dBA
  - o Dry – 64 dBA
- ENERGY STAR® rated

## Programs

- Cotton
- Cotton Eco
- Eco 20°C
- Delicates
- Duvet
- Extras
- Memory
- Super Rapid
- Daily Fast - 60°C (30/60 min)
- Refresh
- Quick Wash & Dry (35/60min)
- Synthetics Wash & Dry
- Cotton 60°C Wash & Dry
- Cotton 90°C Wash & Dry
- STOP

## Specifications

### Product Dimensions (W/H/D)

- 23<sup>5/8</sup>" / 33<sup>1/2</sup>"-36<sup>1/4</sup>" / 24"
- 600mm / 850 / 610mm

### Cut Out Dimensions (W/H/D)

- 24" / 35" / 26<sup>1/2</sup>"
- 610mm / 889mm / 673mm

### Electrical Requirements

- 208/240 V / 60 Hz / 15 Amp
- Supplied with a Canadian Cord & Plug

### Wash/Spin/Condensation Drying

- 6.12 kWh/cycle

### Water Pressure (Mpa)

- Max. 1 Mpa / Min. 0.1 Mpa

### Water Consumption

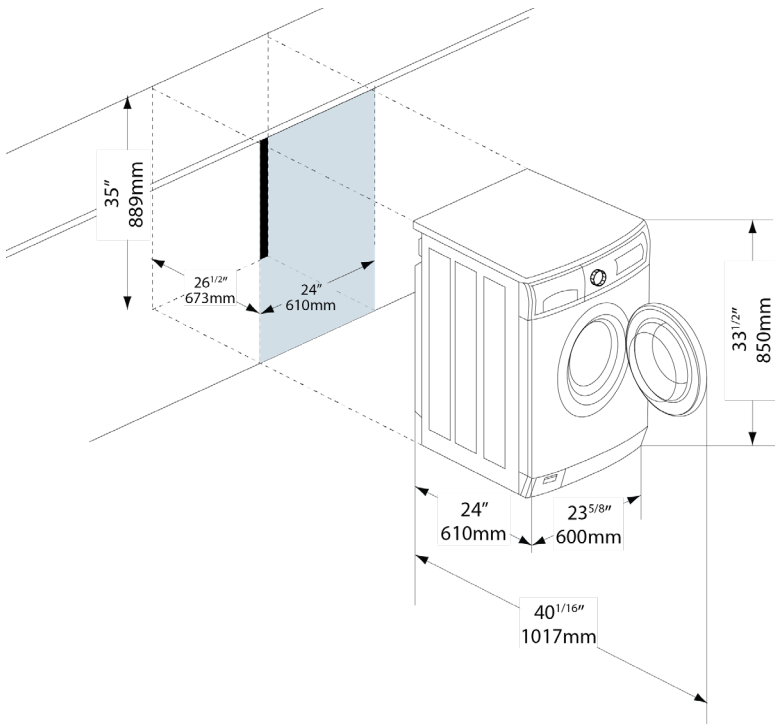
- Wash / Spin Dry: 49 L / cycle

# COMBI9-6

## Specifications



### Install Details



#### Product Dimensions (W/H/D)

- 23<sup>5/8</sup>" / 33<sup>1/2</sup>"-36<sup>1/4</sup>" / 24"
- 600mm / 850 / 610mm

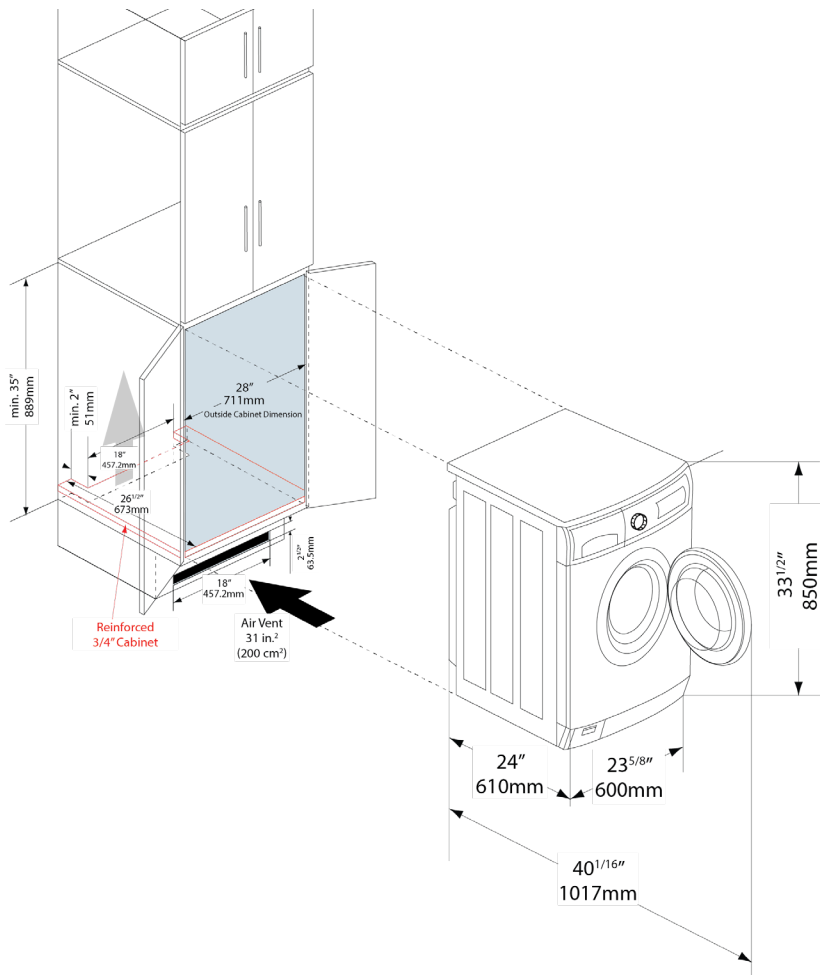
#### Cut Out Dimensions (W/H/D)

- 24" / 35" / 26<sup>1/2</sup>"
- 610mm / 889mm / 673mm

#### Installing Under Counter / Stand Alone

- \*No Exterior Ventilation required
- \*Cold water hook-up via 4ft. long hose located at the back.

### Cabinet Installation



#### Product Dimensions (W/H/D)

- 23<sup>5/8</sup>" / 33<sup>1/2</sup>"-36<sup>1/4</sup>" / 24"
- 600mm / 850 / 610mm

#### Cabinet Dimensions (W/H/D)

- min. 28" / min. 35" / 26<sup>1/2</sup>"
- min. 711mm / min. 889mm / 673mm

#### \*IMPORTANT\*

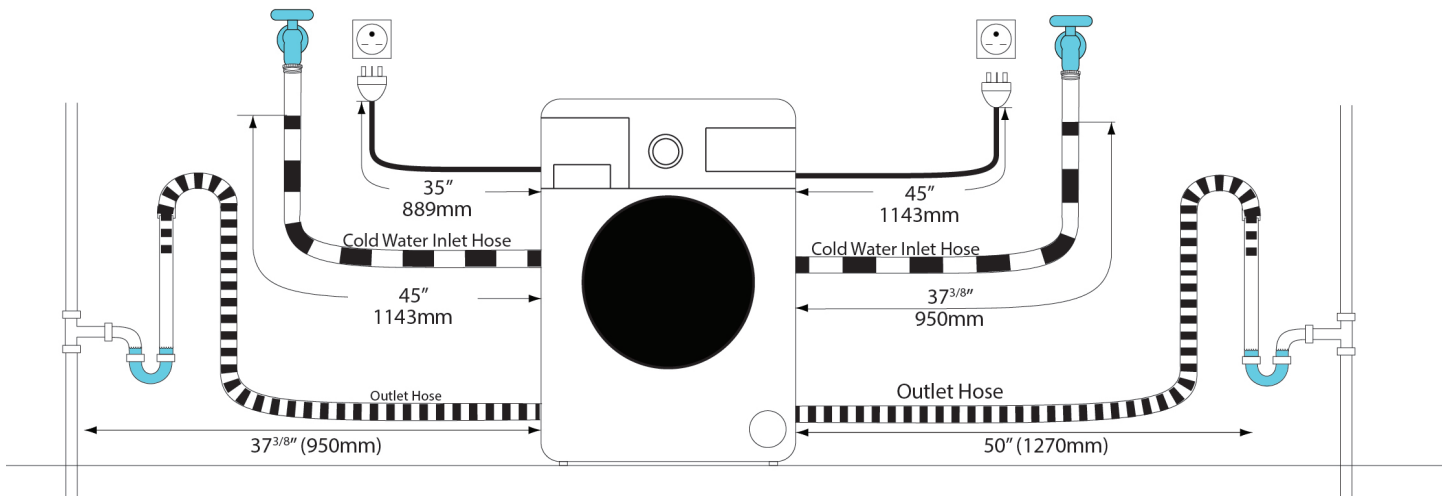
- \*Air vents **ARE REQUIRED** if the unit is housed in a cabinet.
- Air vent must be 200 cm<sup>2</sup>.
- The cabinet space in which the unit is installed **MUST BE REINFORCED** to withstand the weight and vibrations of the unit.

# COMBI9-6

## Specifications



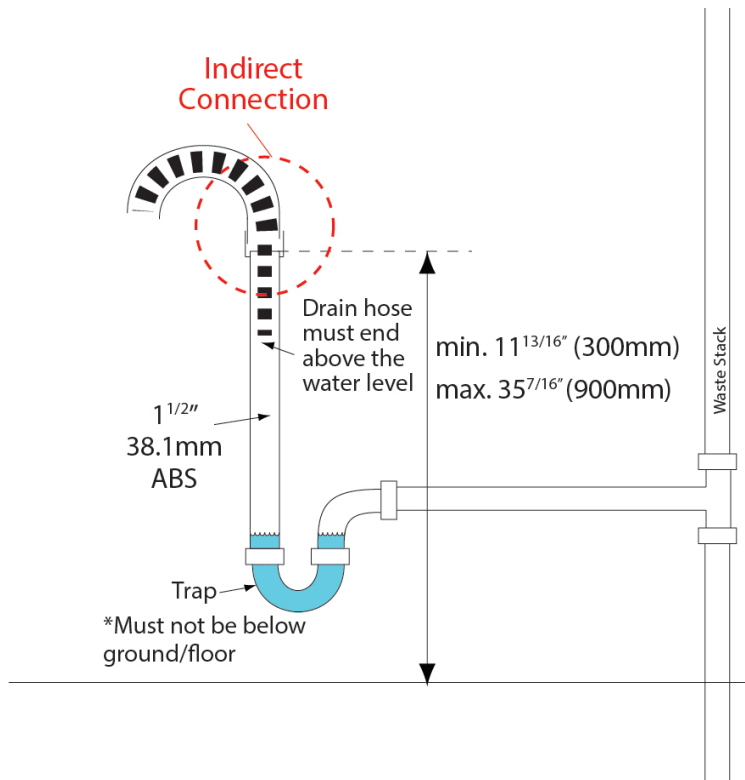
### Hoses & Connections



#### Hose & Connections

- Install the laundry appliance so as to allow ease of access to the electrical and connections through the adjacent cabinet. These connections must never be behind the laundry appliance.
- The inlet and drain hoses can be positioned in either direction, make sure that they are not bent, crushed or too tight. Tighten the ring nut after pointing the hoses in the required direction.

#### Hoses and Connections - Installing the appliance in a narrow space



- Installing the laundry appliance in a narrow space may bend or crush the connections (hoses, power cord). Take great care in order to reduce the possibility of damaging the connections when installing or removing the appliance.
- A through hole with a diameter of at least 10 cm (4") is required to pass the hoses and power cord. Make sure there are no rough edges that could damage the power cord or hoses. If the laundry appliance is installed in a metal unit protect the edge of the through hole for the hoses and power cord with a gasket. Do not use extension cords when making the electrical connection.

Other Product Downloads Available at [porterandcharles.ca](http://porterandcharles.ca)

- [Download Quick Reference Guide](#)
- [Download User Manual 1 of 4](#)
- [Download User Manual 2 of 4](#)
- [Download User Manual 3 of 4](#)
- [Download User Manual 4 of 4](#)



#### WARRANTY INFORMATION

Porter & Charles Appliances are designed and manufactured to the highest standards. Each appliance is covered by a comprehensive 2-year parts and labour warranty. Refer to product warranty policy for complete terms and conditions.

#### FOR PARTS & SERVICE

Euro-Parts & Service  
39822 Belgrave Road, Belgrave, ON. N0G 1E0 1 866 722 2262  
[www.euro-parts.ca](http://www.euro-parts.ca) • [parts@euro-parts.ca](mailto:parts@euro-parts.ca) • [service@euro-parts.ca](mailto:service@euro-parts.ca)

Porter & Charles appliances are imported and distributed in North America by Euro-Line Appliances Inc. For more information, please visit one of our showrooms or [www.ela.ca](http://www.ela.ca) / [www.elawest.ca](http://www.elawest.ca)

#### EURO-LINE APPLIANCES INC.

871 Cranberry Court, Oakville, ON  
L6L 6J7 Canada  
905 829 3980  
1 800 421 6332  
[info@ela.ca](mailto:info@ela.ca)

#### EURO-LINE APPLIANCES INC.

101-1014 Homer Street, Vancouver, BC  
V6B 2W9, Canada  
604 235 3980  
1 855 ELA WEST (352 9378)  
[info@elawest.ca](mailto:info@elawest.ca)