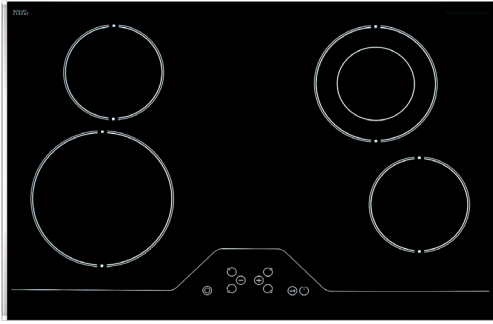


CC76V

30" Built-In Electric Ceramic Cooktop



Signature Features

Black Ceramic Glass Surface

Smooth surface offers a modern style in an easy-to-clean design.

Hi-Lite Ceramic Zones with Power Boost

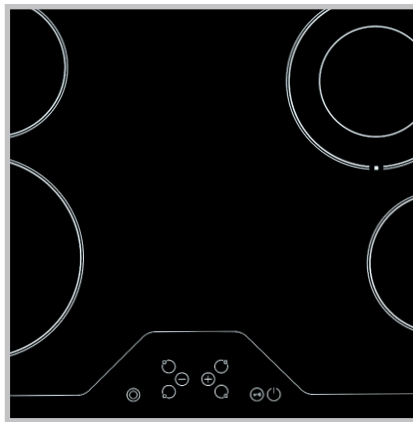
Provides two high-performance zones that allow you to speed up your cooking time with the powerful boost function reducing heat-up times.

Digital Touch Control

Accurately control your heating with user-friendly touch controls on a surface that is easy to clean.

General Properties

- Electric Cooktop
- Black Ceramic Glass Surface
- Stainless Steel Trim
- Beveled Edges



Digital Touch Controls



Stainless Steel Trim

Features

- 4 Hi-Lite zones
- 9 power levels
- Quick heating elements
- Touch control panel
- Child safety lock
- Smart Pause
- Count-down timer
- Residual heat indicator
- Child safety lock
- Shallow depth allows for easy install over drawers or an oven

Cooktop Performance

2 x 16cm Single Zones

- 1,200 Watts

1 x 19cm Double Zone

- 1,700 Watts

1 x 22cm Single Zone

- 2,300Watts

Technical Specifications

Cooktop Dimensions (W/H/D)

- 30^{3/4"} / 19^{1/16"} / 20^{9/16"}
- 781mm / 40mm / 522mm

Cut Out Dimensions (W/H/D)

- 29^{13/16"} / min. 3^{1/8"} / 19^{13/16"}
- 758mm / min. 80mm / 503mm

Electrical Requirements

- 208/240 volt, 60Hz, 40 amp, 6400W
- Supplied with a 5ft long electrical cable and must be hard wired

CC76V

Specifications

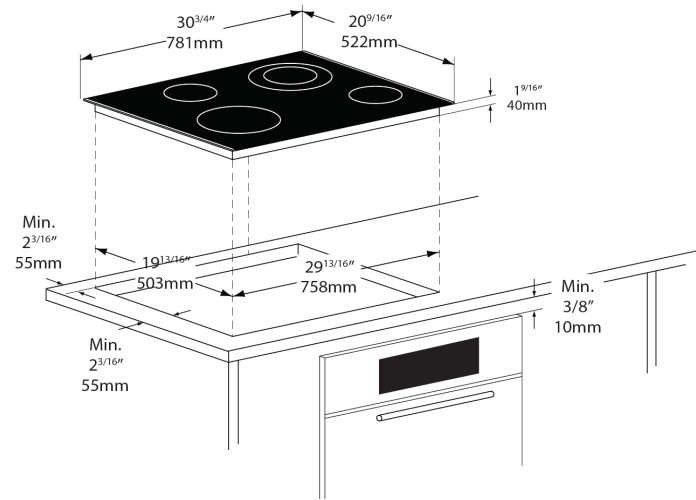


Product Dimensions (W/H/D)

- Width: 30³/₄" (781mm)
- Height: 1⁹/₁₆" (40mm)
- Depth: 20⁹/₁₆" (522mm)

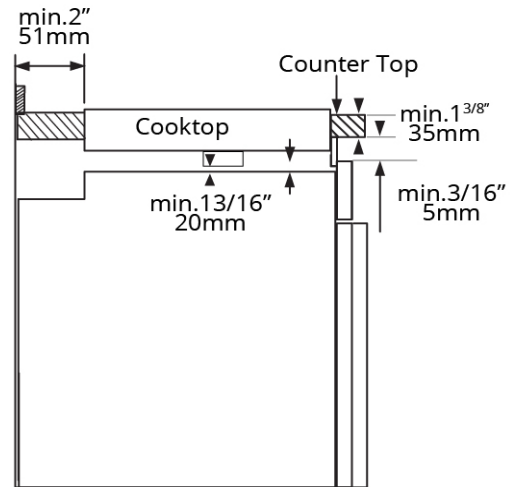
Cut Out Dimensions (W/H/D)

- Width: 29¹³/₁₆" (758mm)
- Height: min. 3⁷/₈" (80mm)
- Depth: 19¹³/₁₆" (503mm)

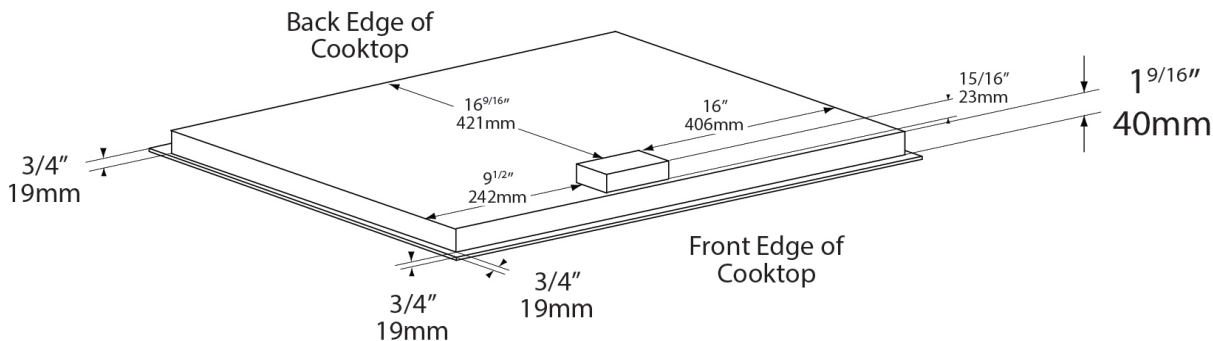


Side View

- There must be a minimum of 20mm (13/16") of space between the bottom of the cooktop and the oven to allow air to flow.
- There must be a minimum of 5mm (3/16") of space between the countertop and built-in oven/drawer door panel.
- If there is insufficient airflow, the appliances life span will be shortened.



Underneath View

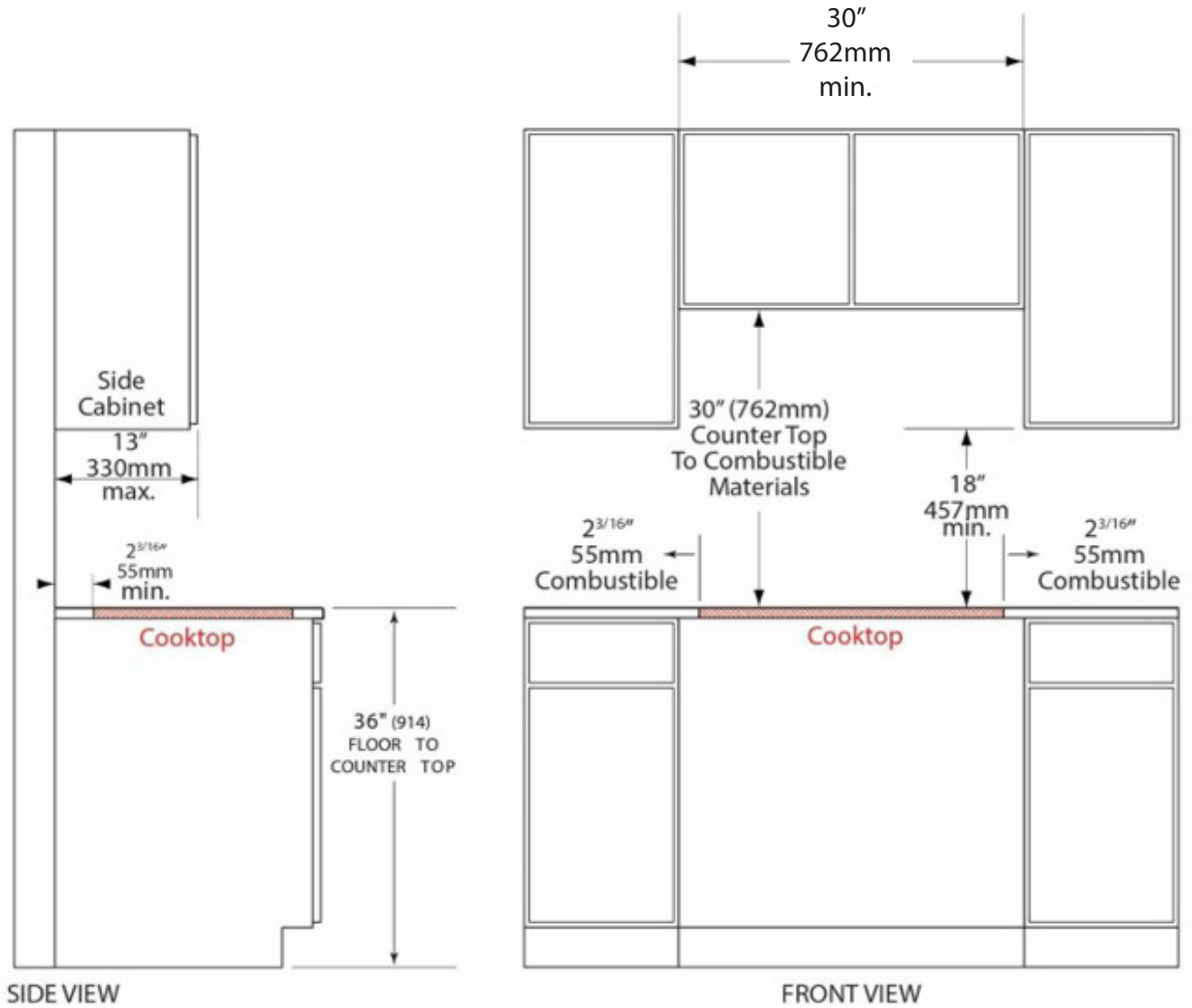


CC76V

Specifications



Recommended Minimum Clearance



Other Product Downloads Available at porterandcharles.ca

- [Download User Manual](#)



WARRANTY INFORMATION

Porter & Charles Appliances are designed and manufactured to the highest standards. Each appliance is covered by a comprehensive 2-year parts and labour warranty. Refer to product warranty policy for complete terms and conditions.

FOR PARTS & SERVICE

Euro-Parts & Service
39822 Belgrave Road, Belgrave, ON. N0G 1E0 1 866 722 2262
www.euro-parts.ca • parts@euro-parts.ca • service@euro-parts.ca

Porter & Charles appliances are imported and distributed in North America by Euro-Line Appliances Inc. For more information, please visit one of our showrooms or www.ela.ca / www.elawest.ca

EURO-LINE APPLIANCES INC.

871 Cranberry Court, Oakville, ON
L6L 6J7 Canada
905 829 3980
1 800 421 6332
info@ela.ca

EURO-LINE APPLIANCES INC.

101-1014 Homer Street, Vancouver, BC
V6B 2W9, Canada
604 235 3980
1 855 ELA WEST (352 9378)
info@elawest.ca