



Deluxe 11.5 cu.ft. Frost Free Bottom Mount Refrigerator



MFF115WBM | MFF115SSBM

Congratulations on the purchase of your new Marathon Refrigerator!

To activate your Warranty, please register your appliance at www.stirlingmarathon.com or by completing and mailing the enclosed Warranty Registration Card. We are confident you will have years of hassle-free enjoyment and ask that you please retain the Use & Care Guide for future reference and your safety.

Before installing please, read your Use & Care Guide carefully and pay special attention to the Safety & Warning information outlined in the following pages.

For immediate assistance: 1-844-309-9777

www.stirlingmarathon.com

Important Safety Instructions

WARNING

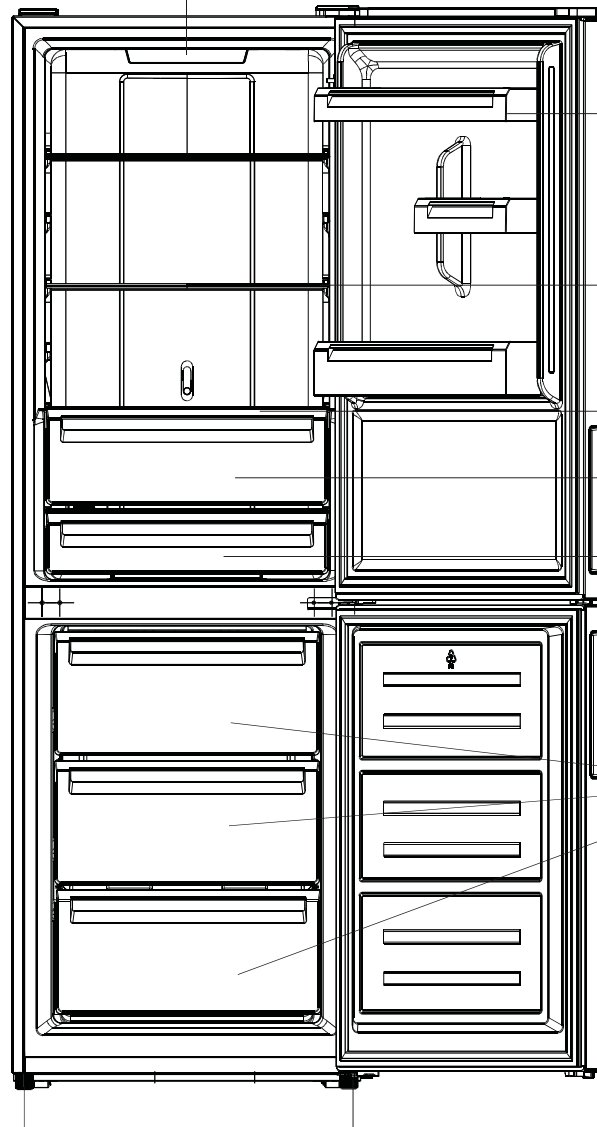
To reduce the risk of fire, electrical shock, or injury follow these basic precautions when using your appliance.

1. Keep ventilation openings, in the appliance enclosure or built-in structure, clear of obstruction
2. Do not use mechanical devices or other means to accelerate the defrosting process, other than those recommended by the manufacturer.
3. Do not use electrical appliances inside the appliance
4. **DANGER:** Never allow children to play with, operate, or crawl inside the appliance. Risk of child entrapment.
5. **GROUNDING INSTRUCTIONS** This appliance must be grounded. In the event of an electrical short circuit, grounding reduces the risk of electrical shock by providing an escape wire for the electrical current. This appliance is equipped with a cord having a grounding wire with a grounding plug. The plug must be plugged into an outlet that is properly installed and grounded.
6. **DO NOT USE AN EXTENSION CORD**
7. Use an exclusive 115V wall outlet. Do not connect your refrigerator to extension cords or together with any other appliance in the same wall outlet. Do not splice the cord.
8. Always unplug before any maintenance or service on the appliance.
9. If a component is damaged, it must be replaced by the manufacturer, its service agent or similar qualified persons in order to avoid a hazard.
10. Follow local regulations regarding disposal of the appliance due to flammable refrigerant and blowing gas. All refrigeration products contain refrigerants, which under the guidelines of federal law must be removed before disposal. It is the consumer's responsibility to comply with federal and local regulations when disposing of this product.
11. This appliance is intended to be used in household and similar environment such as:
 - a) Staff kitchen, workshop, office and other working environments;
 - b) Farmhouses and by clients in hotels, motels and other residential type environments;
 - c) Bed and breakfast type environments;
 - d) Catering and similar non-retail applications.
12. Do not store or use gasoline or any inflammable liquors and liquids inside or in the vicinity of the refrigerator.
13. Do not use an extension cord with this appliance. If the power cord is too short, have a qualified electrician install an outlet near the appliance. The use of an extension can negatively affect the appliance's performance



Overview

Thermostat Control & Light



Door Bins

Tempered Glass Shelves

Crisper Cover

Crisper

Deli Drawer

Freezer Drawers

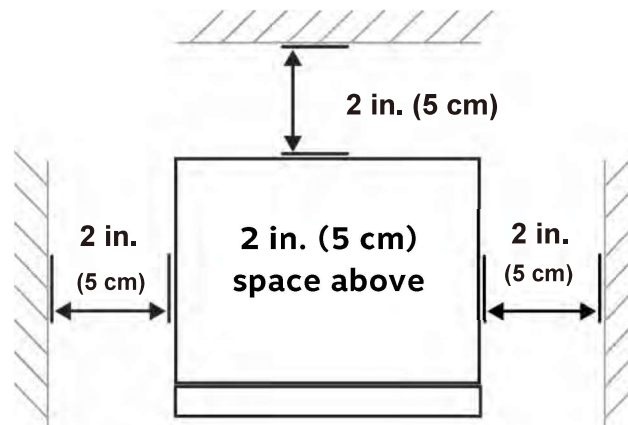
Leveling Feet

Note: Above picture is for reference only. The actual appliance may appear slightly different.

Installation

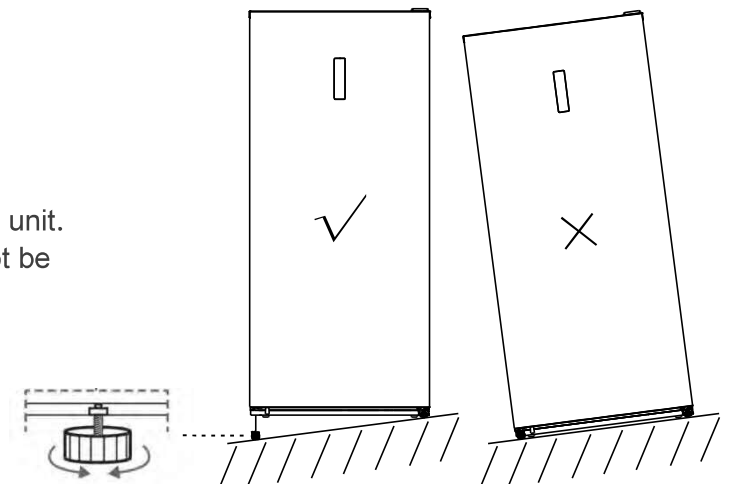
Installing your refrigerator

- This appliance is designed to be free-standing only, and should not be recessed or built-in.
- **This unit is not designed for use in a garage or any other outside installation**
- Ambient temperature below 50°F (10°C) or above 85°F (29.4°C) will hinder the performance of this appliance.
- Avoid locating the refrigerator in high humidity areas.
- Locate the refrigerator away from direct sunlight and sources of heat (stove, heater, radiator, etc.).
- Direct sunlight may affect the acrylic coating and heat sources may increase electrical consumption.
- Select a location with enough space for the refrigerator doors to open easily;
- Select a location with level (or nearly level) flooring;
- Allow sufficient space to install the refrigerator on a flat surface;
- Allow clearance to the right, left, back and top when installing. This will help reduce power consumption and keep your energy bills lower.



Levelling the refrigerator

To do this adjust the two levelling feet at front of the unit. If the unit is not level, the doors and the seal will not be aligned properly.



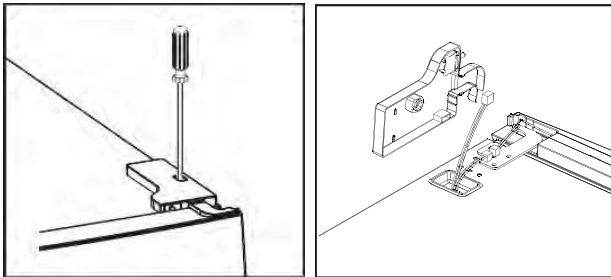
Changing the Reversible Door

Tool required: Philips screwdriver, Flat headed screwdriver,

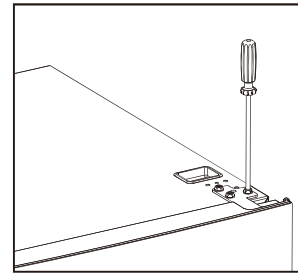
- Ensure the unit is unplugged and empty.
- To take the door off, it is necessary to tilt the unit backwards. You should rest the unit on something solid so that it will not slip during the door reversing process.
- All parts removed must be saved to do re-installation of the door.
- If the appliance is placed on its back or side for any length of time during the process, it must be allowed to remain upright for 4 hours before plugging it in to avoid damage to the internal components.

⚠ CAUTION: To avoid injury, we recommend someone assist you during the door reversal process.

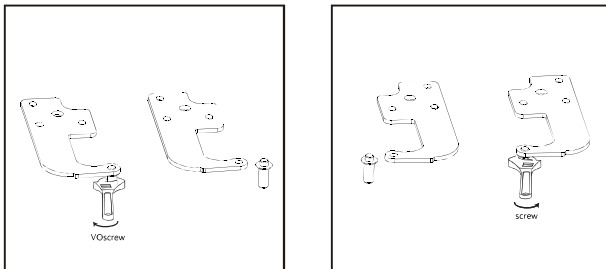
1. Unscrew top hinge cover and disconnect connectors of door switch and harness.



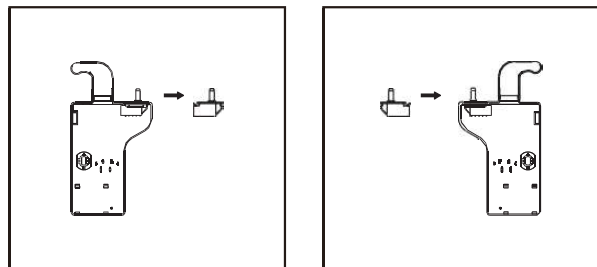
2. Unscrew top hinge



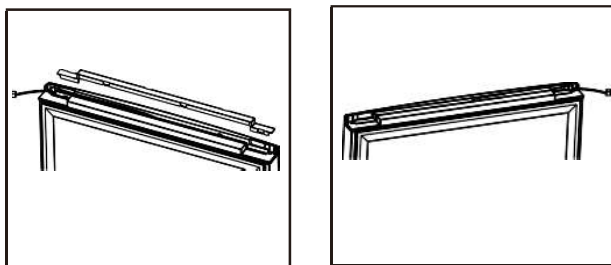
3. Remove the pin with a screwdriver and flip the hinge bracket. Then refit the pin to hinge bracket



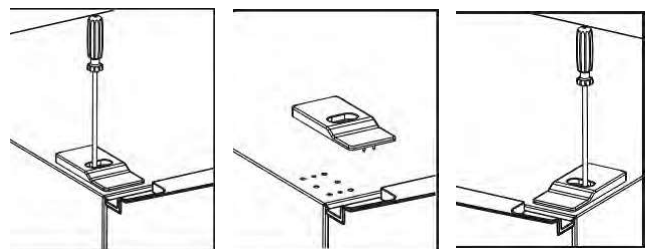
4. Move door switch from right hinge cover to left hinge cover in accessory bag,



5. Detach cover top of upper door and move harness from right side to the left side, then replace cover.

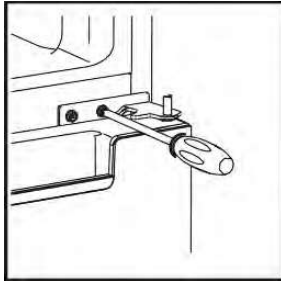


6. Move top left cover to right side.

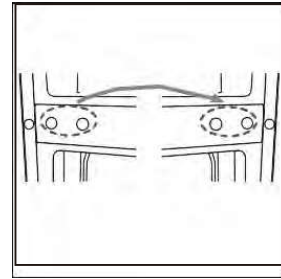


Changing the Reversible Door

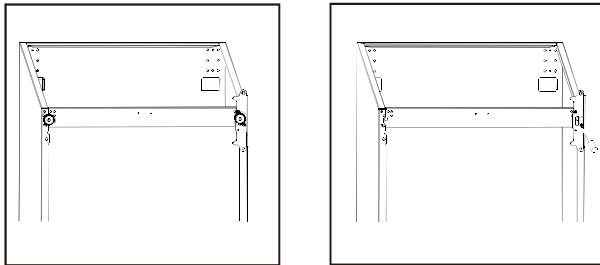
7. Take off the upper door, take out the screw from the middle hinge with the Phillips screw driver then take off the lower door.



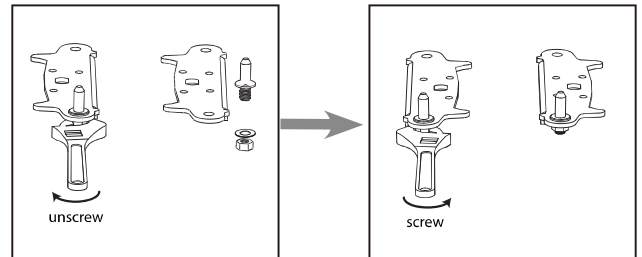
8. Move the Hinge hole covers from left side to right side.



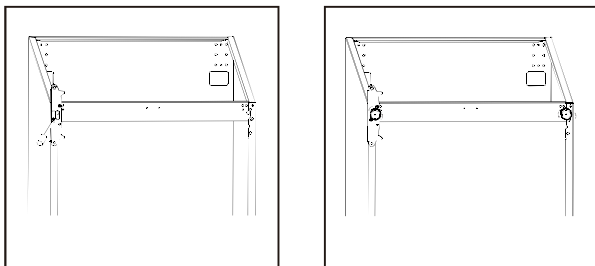
9. Unscrew bottom hinge. Then remove the adjustable feet from both side.



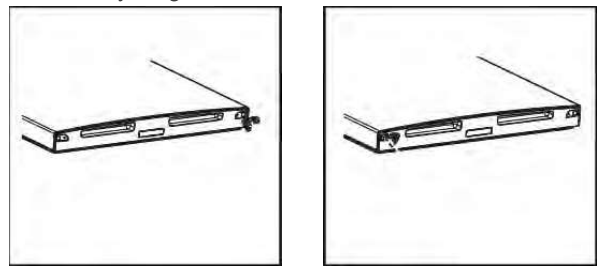
10. Unscrew and remove the bottom hinge pin, turn the bracket over and replace it.



11. Refit the bracket fitting the bottom hinge pin. Replace both adjustable feet.

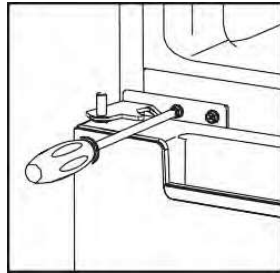
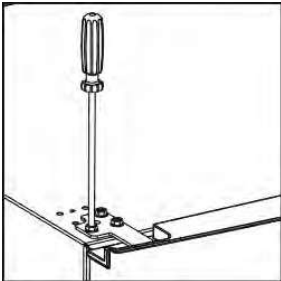


12. Remove hinge assist from bottom of upper and lower doors, then take new hinge assist piece from accessory bag and install them to the left side.



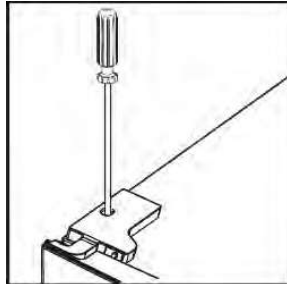
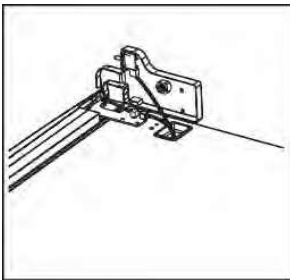
Changing the Reversible Door

13. Install the lower door, adjust and fix the middle hinge onto the cabinet.



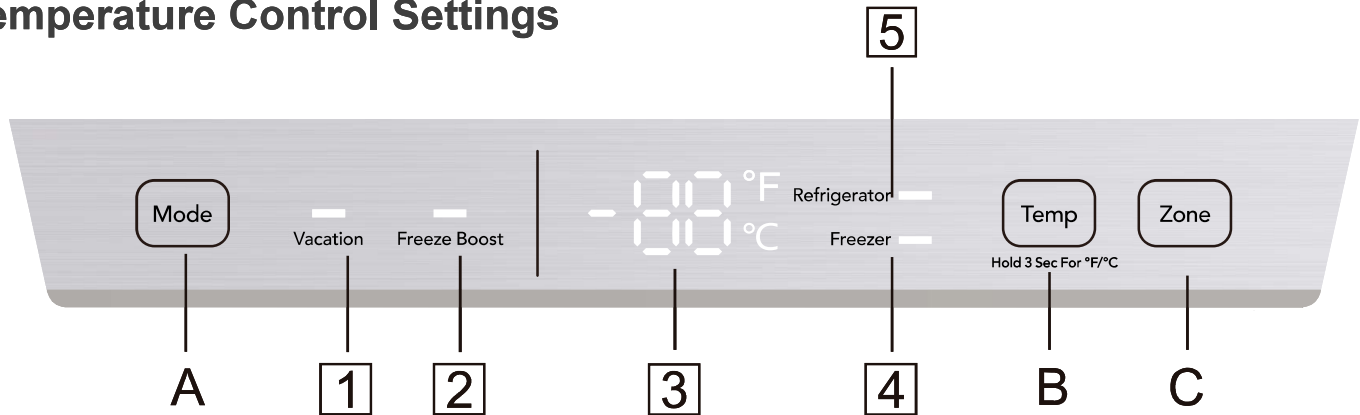
14. Replace upper door, please ensure the door align with the cabinet to make sure door gasket seal the cabinet tightly. Then connect door with cabinet by tightly fixed top hinge.

15. Connect harnesses from door and cabinet. Then replace top hinge cover. Before screw the cover, connect terminals of door switch



Temperature Control

Temperature Control Settings



Buttons Explained

- A.** Press Mode button to select Vacation, Freezer Boost and other user settings.
- B.** Press Temp button to adjust temperature of freezer and fridge compartments Press & hold Temp button to switch between Celsius and Fahrenheit.
- C.** Press Zone button to select the compartment you would like to adjust the setting for.

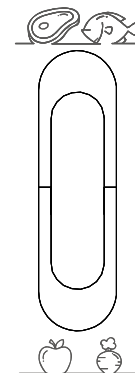
Display and light

- 1** Light above the Vacation button will illuminate when this mode is selected.
- 2** Light above the Freezer Boost button will illuminate when this mode is selected.
- 3** Temperature display of the refrigerator and freezer compartments.
- 4 5** Zone light will illuminate to show which compartment is selected.

Fresh zone Temperature Control

- Temperature of the fresh can be adjusted according to the type of storage food.
- Push the knob upward from the bottom, temperature in the fresh zone will be gradually decreased.
- When the knob is placed at the position, the fresh zone can be functioned as a crisper zone and maintain the appropriate temperature and humidity for fruits and vegetable.
- When the knob is placed at the , it is suitable for short-term storage of fish or other fresh food. The food will keep fresh but not frozen which makes it the best choice for storing fresh food.
- Tips: When you choose function, it is recommended to set the refrigerator temperature below 4°C and preserved lead-time no more than 3 days, in order to keep the best freshness.

**FRESH
CONVERTER**



Setting Modes

Vacation mode

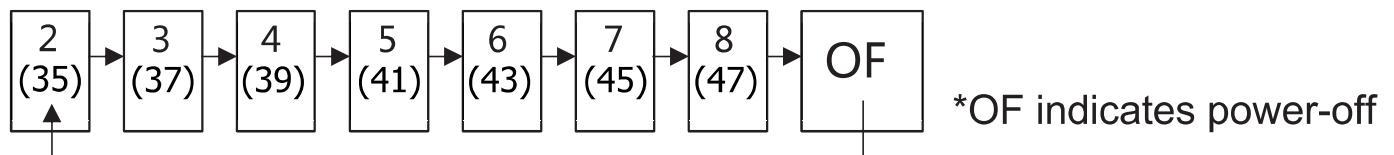
In this mode, the temperature of the fridge and freezer is automatically set at 5°C (41°F) and -18°C (0°F). The temperature in this mode is not adjustable for either compartment. In this setting, the appliance will run with very low energy consumption.

Freeze Boost Mode

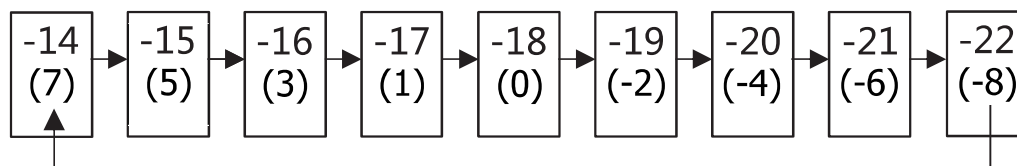
In this mode, the temperature in the freezer compartment will set to -25°C. The temperature in the freezer will drop quickly. This setting is intended to optimize preservation of food. If you plan to freeze a large volume of food at once, it is recommended to select the Freezer Boost setting 24 hours ahead of time.

The temperature of the fridge compartment is still adjustable in this mode. The freezer temperature will go back to the previous temperature setting automatically after 50 hours.

Setting the Fridge Temperature



Setting the Freezer Temperature



Door Ajar Alarm

If the door is opened for over 60 seconds, the alarm will automatically sound. Please close the door immediately to save energy.

Cleaning

For hygienic reasons the appliance interior, including interior accessories, should be cleaned regularly.




Caution! The appliances may not be connected to any power supply during cleaning. Danger of electrical shock! Before cleaning switch the appliance off and remove the plug from the outlet, or switch off the circuit breaker/fuse. Never clean the appliance with a steam cleaner. Moisture could accumulate in electrical components, danger of electrical shock! Hot vapours can lead to the damage of plastic parts. The appliance must be dry before it is placed back into service.

Important! Ethereal oils and organic solvents can attack plastic parts, e.g. lemon juice or the juice from orange peel, butyric acid, a cleaner that contains acetic acid.

- Upon installation of your new appliance, it is recommended that it be cleaned thoroughly.
- Wash the inside with a damp warm cloth soaked in lukewarm water and baking soda solution. The solution should be about 2 tablespoons of baking soda to a quart of water.
- Be sure to keep the door gasket (seal) clean to keep the unit running efficiently.
- The outside of the refrigerator should be cleaned with mild detergent and warm water.
- Dry the interior and exterior with a soft cloth.
- To keep the inside sanitary without odor or dirty, regular cleaning required at least once a month.
- Do not allow such substances to come into contact with the appliance parts;
- Do not use any abrasive cleaners;

Important Warning

- △ Keep ventilation openings, in the appliance enclosure or built-in structure, clear of obstruction. Do not use mechanical devices or other means to accelerate the defrosting process, other than those recommended by the manufacturer.
- △ Do not change or damage the refrigerant circuit.
- △ Do not store explosive substances such as aerosol cans with a flammable propellant in this appliance.
- △ During transportation and installation of the appliance, be certain that none of the components of the refrigerant circuit have become damaged.
- △ It is dangerous to alter the specifications or modify this product in any way.
- △ Any damage to the cord may cause a short circuit, fire and/or electric shock.
- △ This appliance is intended to be used in residential household, office or light commercial applications such as Hotels and College Dorms.
- △ All electrical components (plug, power cord, compressor and, etc.) must be replaced by a certified service agent or qualified service personnel.
- △ The refrigerant contained within the compressor of the appliance is isobutene (R600a) which is environmentally friendly but flammable.
- △ Make sure that the power cord is not crushed or damaged at the back of the appliance. A crushed or damaged power cord may overheat and cause a fire.
- △ The power cord must not be lengthened.
- △ Make sure that you can come to the power cord of the appliance Do not pull the unit by the power cord.
- △ If the electrical outlet is loose, do not insert the power plug. There is a risk of electric shock or fire. This appliance is heavy. Care should be taken when moving it.
- △ Do not remove or touch items from the freezer compartment if your hands are damp/wet, as this could cause skin abrasions or frost/freezer burns.
- △ Avoid prolonged exposure of the appliance to direct sunlight.

 Locate the refrigerator away from direct sunlight and sources of heat (stove, heater, radiator, etc.). Direct sunlight may affect the acrylic coating and heat sources may increase electrical consumption. Ambient temperature below 50°F (10°C) or above 85°F (29.4°C) will hinder the performance of this appliance. **This unit is not designed for use in a garage or any other outside installation**

Troubleshooting

You can solve many common refrigerator problems easily, saving you the cost of a possible service call. Try the suggestions below to see if you can solve the problem before calling for service.

Problem	Possible Causes
The refrigerator does not operate.	<ul style="list-style-type: none"> •The power cord is unplugged. •The circuit breaker is tripped/fuse blown.
The compressor turns on and off frequently	<ul style="list-style-type: none"> •The room temperature is warmer than normal •A large amount of food has been added to the refrigerator. •The door is left open or is frequently opened. •The temperature control is not set correctly •The door is not closed completely. •The door gasket does not seal properly. •The refrigerator does not have the correct clearances. •The refrigerator has recently been disconnected for a period of time.
The temperature inside the refrigerator is too warm.	<ul style="list-style-type: none"> •The temperature control is not set correctly. •The door is left open or is not set correctly. •The door gasket does not seal properly. •A large amount of warm or hot food was stored recently. Wait for the refrigerator to reach its selected temperature. •The refrigerator has recently been disconnected for a for a while
Vibrating or rattling. (slight vibration is normal)	<ul style="list-style-type: none"> •Levelling legs need adjusting. •Refrigerator is placed on an uneven or weak surface. •The refrigerator is touching the wall. Re-level the refrigerator and move it away from the wall.
The temperature of the external of the refrigerator's surface is warm	<ul style="list-style-type: none"> •The exterior refrigerator walls can be as much as 30°F warmer than room temperature. •This is normal while the compressor works to transfer heat from inside the refrigerator cabinet.
Moisture collects inside the refrigerator.	<ul style="list-style-type: none"> •The door is slightly open or is frequently opened. •The door is not sealed properly.
Moisture forms on the outside of refrigerator.	<ul style="list-style-type: none"> •Is normal in hot and humid weather. Air carries moisture into the refrigerator when doors are opened
Bubbling or gurgling sounds. (like boiling water)	<ul style="list-style-type: none"> •This is the normal sound of refrigerant (used to cool the refrigerator) circulating throughout the system
Popping or crackling sounds when the compressor comes on.	<ul style="list-style-type: none"> •This is normal. Metal parts undergo expansion and contraction. The sound will level off or disappear as the refrigerator runs.
The door will not close properly.	<ul style="list-style-type: none"> •The refrigerator is not on a level surface. •The gasket is dirty. •A storage basket is out of position.

For any questions or concerns, please contact us at customerservice@stirlingmarathon.com or visit us at www.stirlingmarathon.com

Error codes

Possible issue	CODES
Signal transmission between control board and main board. Probably defects of harness (wire and connectors), main board or control board	E0
Temperature sensor of fridge compartment	E1
Temperature sensor of freesser compartment	E2
Defrost temperature sensor in freezer compartment	E3
Fan motor in evaporator room of freezer compartment	E4
Defrost heater or the fuse connected with heater	E5

When an error code is displayed, please call the manufacturer for more information.



2 Years Limited Warranty

When operated and maintained according to the instructions in the Use & Care Guide, MARATHON a registered trademark of Stirling Marathon Limited agrees to repair or replace this product for 2 years from the date of original purchase and/or agrees to pay for parts and service/labour required to correct defects in materials or workmanship. Any Service must be approved and provided by an Authorized Stirling Marathon Service provider. YOUR EXCLUSIVE REMEDY UNDER THIS LIMITED WARRANTY SHALL BE PRODUCT REPAIR OR REPLACEMENT AT THE SOLE DISCRETION OF STIRLING MARATHON LIMITED AS PROVIDED HEREIN. This limited warranty is valid only in Canada and the Continental United States with proof of original purchase and confirmed warranty registration.

TERMS OF WARRANTY BY PRODUCT	Capacity/Type	Warranty Type
Refrigeration & Freezer	Less than 6 cu.ft	Carry-In
Refrigeration & Freezer	Greater than 6 cu.ft.	In-Home
Electric & Gas Ranges	All Sizes	In-Home

How to Obtain Service

Carry-In: The original purchaser must deliver or ship the defective product to an authorized Stirling Marathon Service present a copy of the original bill of sale or Warranty Registration Confirmation.

In-Home: Contact Authorized Service Center and provide a copy of the Original bill of sale or Warranty Registration Card. If you are in a remote area or the closest Authorized Service Center is further than 100 km (60 miles), you will be required to deliver the appliance to the closest Service Center at your expense.

Stirling Marathon is not responsible or liable for any spoilage or damage to food or other contents of this appliance, whether due to any defect of the appliance, or its use, whether proper or improper.

Items Excluded from Warranty

- Damages due to shipping or improper installation.
- Damages due to misuse or abuse.
- Content losses due to failure of the unit.
- Commercial or Rental Use Limited to 90 days Parts & Labour.
- Plastic parts such as door bins, panels, door shelves, racks, light bulbs, etc.
- Punctures to the evaporator system due to improper defrosting of the unit.
- Service or Repair by unauthorized service technicians.
- Service calls that do not involve defects in material and workmanship such as instruction on the proper use of the product, door reversal or improper installation.
- Replacement or resetting of house fuses or circuit breakers.
- Delivery costs incurred as the result of a unit that fails.
- Expenses for travel and transportation for product service if your appliance is located in a remote area where service by an unauthorized service technician is not available.
- The removal and reinstallation of your appliance if it is not installed correctly or is in an inaccessible location, as per the published installation instructions.
- Liability under this warranty is limited to repair, replacement or refund. If a replacement unit is not available or the unit cannot be repaired, liability is limited to the actual.
- Purchase price paid by the consumer.
- This warranty applies only to the original purchaser and does not extend to any subsequent owner(s) and is non-transferable.
- No warranty or insurance herein contained or set out shall apply when damage or repair is caused by any of the following: accident, alteration, abuse or misuse of the appliance such as inadequate air circulation in the room or abnormal operating conditions (extremely high or low room temperature).
- Use for commercial or industrial purposes (i.e. If the appliance is not installed in a domestic residence). Fire, water damage, theft, war, riot, hostility, acts of God such as hurricanes, floods etc.
- Service calls resulting in customer education.
- Improper installation (ie. Building-in of a free-standing appliance or using an appliance outdoors that is not approved for outdoor application).

For Service or Assistance please contact us at: customerservice@stirlingmarathon.com
or visit us at www.stirlingmarathon.com