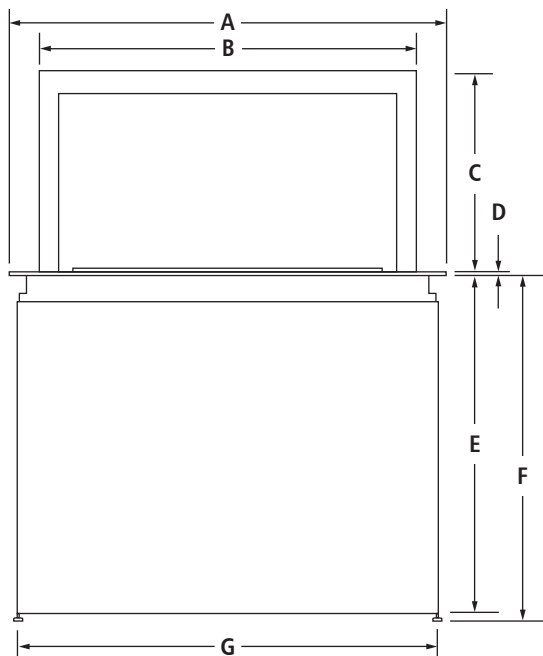


36" ACCOLADE™ DOWNDRAFT VENTILATION SYSTEM

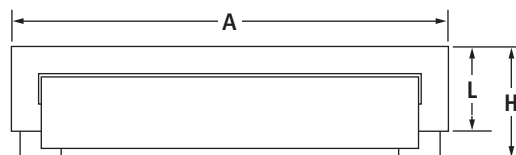
JXD7836BS – 40³/₄" x 57⁵/₁₆" x 10³/₈"

PRODUCT DIMENSIONS

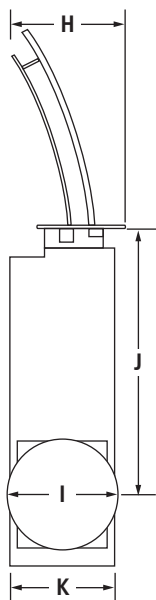


FRONT VIEW

MODEL #		JXD7836BS	
		in	cm
A	Overall width	40 ³ / ₄	103.5
B	Width of retractable vent	35 ¹ / ₄	89.5
C	Height of retractable vent	18 ¹ / ₂	47.1
D	Height of top trim	⁵ / ₁₆	0.8
E	Height of recessed downdraft vent	29 ¹⁵ / ₁₆	76.0
F	Height of recessed downdraft vent with leveling feet (min.-max.)	33-38 ¹ / ₂	83.8-97.8
G	Width of recessed downdraft vent	39 ¹ / ₄	99.7
H	Overall depth	10 ³ / ₈	26.4
I	Vent collar diameter	10	25.4
J	Top of counter to middle of vent collar	26	65.9
K	Depth of recessed downdraft vent	9 ¹ / ₄	23.5
L	Depth of top trim	7 ⁷ / ₈	20.0



TOP VIEW

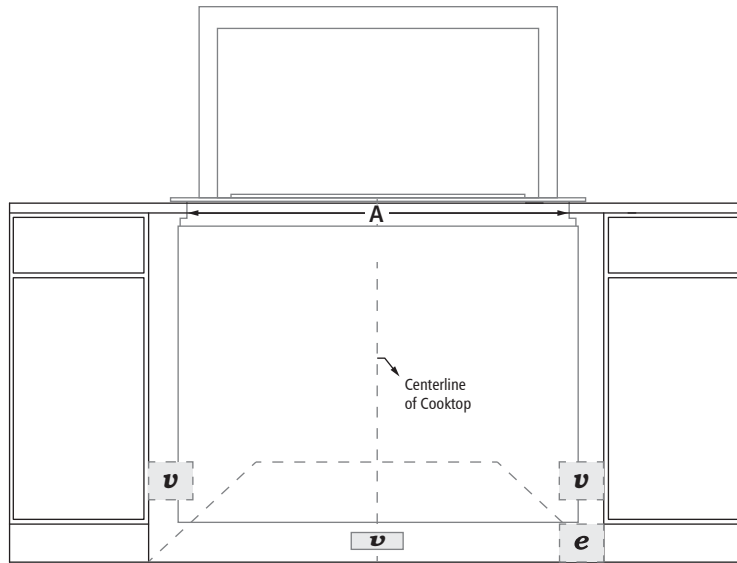


SIDE VIEW

36" ACCOLADE™ DOWNDRAFT VENTILATION SYSTEM

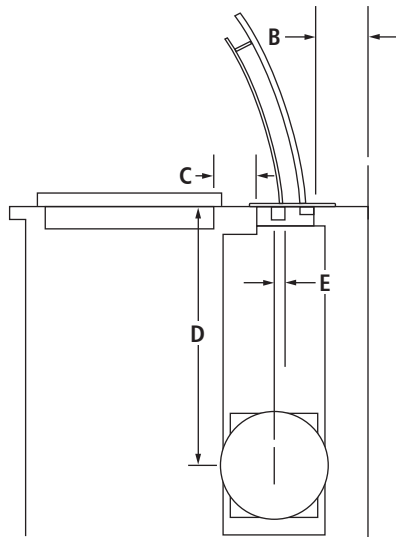
JXD7836BS – 40³/₄" x 57⁵/₁₆" x 10³/₈"

DIMENSIONS AS INSTALLED



FRONT VIEW

MODEL #		JXD7836BS	
		in	cm
A	Width of cutout	39 ⁷ / ₁₆	100.2
B	Depth from back wall to vent box cutout (min.)	2	5.1
C	Depth from cooktop cutout to vent cutout (min.)	3 ¹ / ₂	8.9
D	Height from center of vent cutout to top of countertop – side wall vent option	26	65.9
E	Depth from center of vent cutout to vent collar center	1 ³ / ₈	3.6
e	Recommended junction box location		
v	Recommended venting location	Clearance for 10" (25.4 cm) diameter duct	

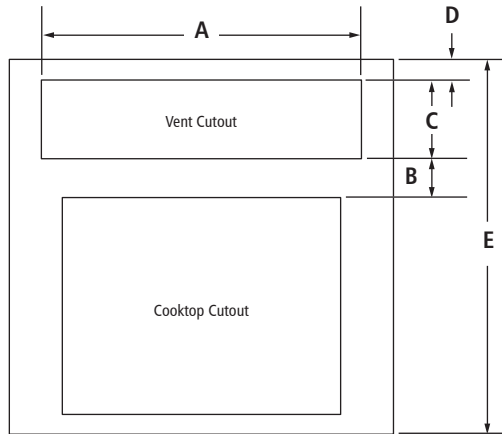


SIDE VIEW

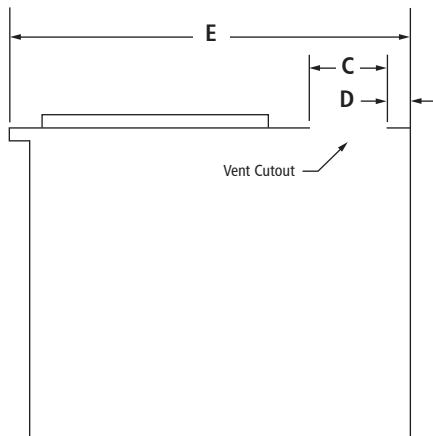
36" ACCOLADE™ DOWNDRAFT VENTILATION SYSTEM

JXD7836BS – 40³/₄" x 57⁵/₁₆" x 10³/₈"

OPENING/CLEARANCE DIMENSIONS



TOP VIEW



SIDE VIEW

MODEL #		JXD7836BS	
		in	cm
A	Width of cutout	39 ⁷ / ₁₆	100.2
B	Depth from cooktop cutout to cutout (min.)	3 ¹ / ₂	8.9
C	Depth of cutout	6 ¹ / ₁₆	17.0
D	Depth from cutout to wall (min.)	2	5.1
E	IMPORTANT: Cabinet and countertop depths are determined by the cooking appliances to be used with this downdraft vent system.		

LOCATION REQUIREMENTS

Cabinet and countertop depth requirements may be deeper than 38" (96.5 cm). This is determined by the cooking appliances being installed with this downdraft vent system.

ELECTRICAL REQUIREMENTS

120 volt, 60 Hz, AC only, 15-amp fused, electrical circuit is required.

VENTING REQUIREMENTS

The vent is factory set for a 10" diameter (25.4 cm) vent system venting through the wall or floor. Do not terminate the vent in an attic or other enclosed area.