



WALL-MOUNT

ASPIRE SERIES

Dimensions

30"W x 19 11/16"D x 10 1/4"H
36"W x 19 11/16"D x 10 1/4"H

Models

EVR630S1 Varna 30" Stainless
EVR636S1 Varna 36" Stainless

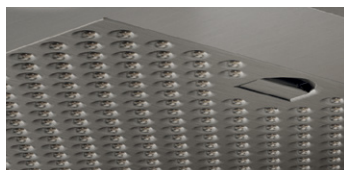
Special features



halogen lamps



multi-function electronic controls with LCD display



stainless steel micro hole filters



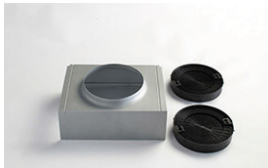
The clean lines, beautifully sloping angles and stainless steel finish of Varna make a striking visual statement. Available in 30" or 36" width, Varna features include a powerful 600 CFM blower, halogen lighting with 2 light intensities, dishwasher-safe stainless steel microhole filters and multi-function electronic controls with LCD display that deliver convenience and safety.

Designed for standard ducted installation (for heights 7'11" to 9'2"), Varna can also be installed as a recirculating system (for heights 7'11" to 9'6") using the Recirculating Kit, available as an accessory.

FEATURES

Size (in) & Type Finish	30" or 36" Wide Wall-Mount Chimney Stainless Steel
Controls	Multi-function electronic with LCD display
Illumination	2, 40 Watt Halogen Lamps, 2 Light Intensities (bulbs included)
Installation Type	Ducted or Recirculating Installation Recirculating Kit Sold Separately
Blower Type	600 CFM, 4-Speed Internal
Blower Performance	Speed 1, 160 CFM, 1.7 Sones Speed 2, 280 CFM, 3.3 Sones Speed 3, 475 CFM, 6.0 Sones Speed 4, 600 CFM, 8.2 Sones
Filter Type	Dishwasher-Safe, Professional Stainless Steel Baffle (2 w/ 30", 3 w/ 36")
Telescopic Chimney Extension	For heights 7'11" - 9'3" (ducted) For heights 7'11" - 9'6" (recirculating)
Duct Transition	6" Round with Back Draft Damper (top)
Electrical	120V-60Hz 550 Watts at 4.6 Amps (600 CFM), 800 Watts at 6.7 Amps (1200 CFM)
Warranty	2 Year Parts & Labor, In-Home Service

ACCESSORIES



Optional Recirculating Kit for 30" and 36"

CODE: KIT02766
MODEL: EXXRCK09



Optional Long Chimney Extension Kit

Reaches 8'11" - 11'4" (ducted)
Reaches 9'3" - 11'8" (recirculating)

CODE: KIT02762
MODEL: EXXCEK05

CONSUMABLE PARTS

Replacement Grease Filter (1)

CODE: GFO4YB

Replacement Carbon Filter (1)

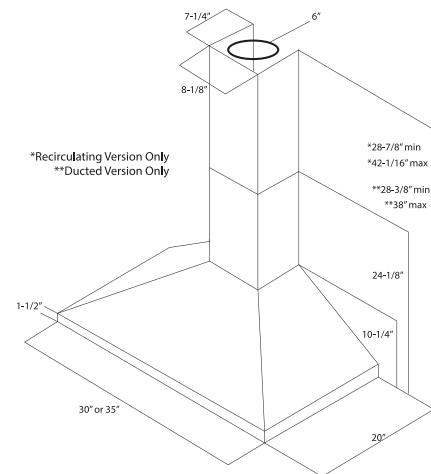
CODE: KIT02667

Replacement Light Bulb (1)

CODE: 2006BH

Consumable parts are sold in units of one (1). Order accordingly.

LINE DRAWING



SPECIAL FEATURES



Elica CRS:

CFM Reduction System (CRS), is an exclusive feature to Elica hoods, which enables the installer to reduce the maximum blower CFM, to meet local code requirements.



Elica Heat Guard:

A safety feature that protects the hood and cabinetry from excessive heat, by sensing extreme temperatures (>158 degrees) and will automatically adjust the blower speed to HIGH. Blower speed will automatically adjust back once temperatures drop to a safe level.