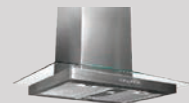




USE AND CARE GUIDE

MODELS
SC(B)302

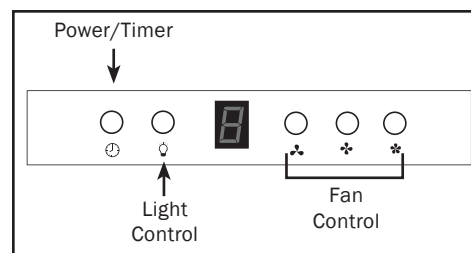


OPERATION INSTRUCTIONS

Fan Operation

Fan Speeds: Three speed settings give the customer total control of their fan at the push of a button.

Timer: This collection features a time-delay off feature to automatically shut the fan off after 1 to 9 minutes to conveniently clear the smoke and grease after cooking. To program the time-delay feature, press the button with the clock icon while the machine is on and then use the lowest speed setting button to toggle between 1 to 9 minutes.

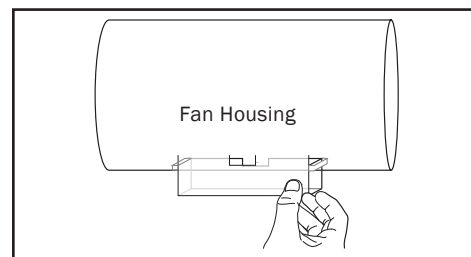


Grease Disposal

WARNING! Do not remove filters or grease cups immediately after cooking or if grease is still hot.

Nonstick-coated fan blades will separate grease from the air and the grease will then be deposited into a grease cup for easy, convenient disposal. You will find the grease cup in a bag with the bracket and screws in the box. The grease cup can be used in conjunction with the mesh filters with certain models, while others can only use one or the other.

Tip: Soak all parts in soapy water if there is heavy grease.

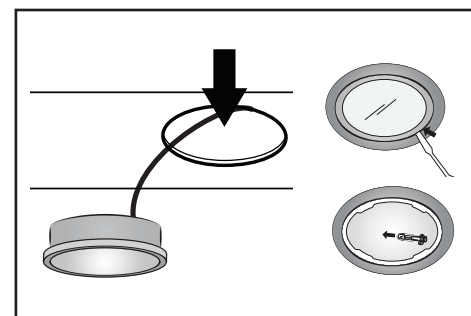


Changing Light bulbs

WARNING! Ensure that all power leading to your range hood has been disconnected before changing bulbs. As well, ensure that lights have fully cooled before changing bulbs.

To change the light bulb, remove light case from the light socket. The light case can be accessed from the inside of the body of the machine.

1. Remove grease filters and push light case outward away from the machine.
2. Disconnect the connecting wires of the light socket from the motherboard wires.
3. Once the light case has been detached from the range hood, use a flat screw driver to remove the glass cover of the light case.
4. Detach light bulb and replace with a new bulb.



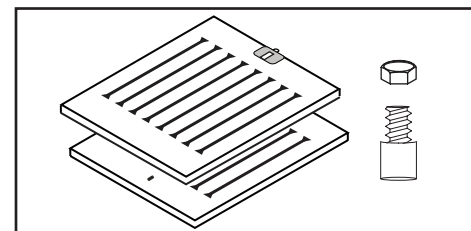
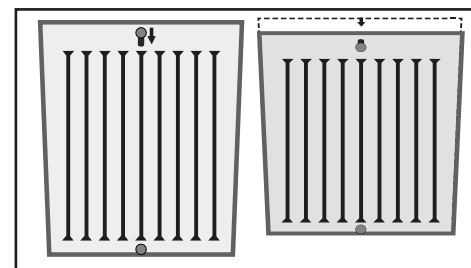
Baffle Filters

WARNING! Ensure that all power leading to your range hood has been disconnected before removing filters and cleaning your fan.

Removal: In order to remove the baffle filters, push downwards on the knob near the front of the machine and pull the filter downwards away from the machine.

Disassembly: To disassemble the baffle filter, unscrew the top knob with pliers. Your filter will disassemble into two halves of the filter, the knob, and a nut. The two filter pieces can be cleaned in the top rack of the dishwasher.

Reassembly: To reassemble the pieces of the baffle filter, first place the two pieces of the filter against each other. When placing the filter together, ensure that all tabs fit into the slots to keep both pieces of the filter attached. Place the knob and the nut together, then screw the knob into the nut.



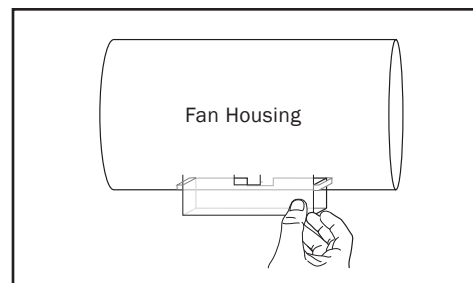
MAINTENANCE

Cleaning

Mesh Filters: Removable filters can be cleaned by the dishwasher in the top rack, or by soaking in the sink.

Baffle Filters: Disassemble the baffle filter into separate pieces by unscrewing the knob. Removable filters can be cleaned by the dishwasher, or by soaking in the sink.

Exterior: The exterior of the machine can be maintained by wiping the surface area. Use a stainless steel cleaner and a very gentle cloth for stainless steel machines.



REPLACEABLE PARTS

NAME	QTY	DESCRIPTION	IMAGE
WM 01	1	Canopy Oil Collector	
WM 05	2	Type G4 12V 20W	
WM 06	2	Light Socket Kit (Includes light, socket, connecting wire)	

NAME	QTY	DESCRIPTION	IMAGE
MFC 02	2	Mesh Filters	
BFC 02	2	Baffle Filters	

FREQUENTLY ASKED QUESTIONS

When do I need a Cyclone Range Hood?

Peoples' cooking habits vary, but getting rid of airborne contaminants and odours which linger in your cooking area is important for everyone. Whether it is steam from cooking soups steaming vegetables, grease and oil from frying food, it is important for everyone to have efficient ventilation in their kitchen

Can I install a Cyclone Range Hood myself?

Installing a Cyclone Range Hood is fairly straightforward, and we provide detailed installation instructions. We do not recommend range hood installation for novices to electrical or handy work.

What is the minimum mounting height between the range top to hood bottom?

The minimum mounting height between the range top to hood bottom should be no less than 30". The maximum mount height should be no more than 36". The hood must be installed at the correct mounting height. Hoods mounted too low can result in heat damage, and hoods mounted too high will have impaired performance.

How often do I clean my Cyclone Range Hood?

Cyclone recommends that our range hoods are cleaned at least once every month. However, cooking habits differ and cleaning should reflect the frequency and intensity of cooking.

What is the difference between a mesh and a baffle filter?

Most Cyclone Range Hoods wall mount models have mesh filters which can be exchanged for baffle filters. Baffle filters are a durable alternative to mesh filters, capture more grease, and provide a pleasant aesthetic.

Can I get a longer chimney flue to reach my high ceilings?

Cyclone canopy range hoods can accommodate to almost any ceiling height. Extended chimney pieces can be purchased separately for higher ceilings, and our chimneys can be custom cut to accommodate shorter ceiling heights.