

BLUESTAR® PRO-LINE HOOD SERIES

With over 130 years of experience making cooking equipment, and as the leading manufacturer of high-performance commercial-style ranges for the home, BlueStar® is now proud to offer a line of commercial-grade stainless steel hoods.

The perfect complement to a BlueStar® range or cooktop, BlueStar's Pro-Line Hood Series combines heavy-duty construction with seamless design to produce a hood with uncompromised durability, functionality, and beauty. And with 750+ standard colors from which to choose, it's easy to match any kitchen's color scheme.



Model BS-PL36240 in Red Wine (RAL 3005)

Pro-Line Hood Features

- Available in 30", 36", 42", 48", 54", 60" and 66" width sizes.
- All sizes available with up to 1200 CFM.
- Commercial grade 18 gauge 300 stainless steel construction.
- Welded seamless construction.
- Dishwasher safe stainless steel baffle filters.
- 3-speed blower control.
- Halogen lamps with dimmer control.
- Reversible top or rear exhaust.
- Largest filtered capture area in the industry.
- Available in 750+ colors and finishes.

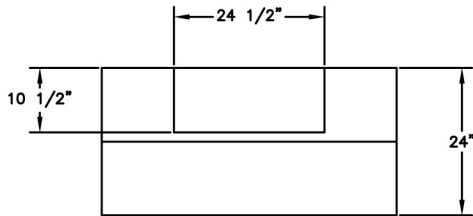
Pro-Line Hood Models

Model	Size	Material	In-Hood CFM	In-Line CFM	Remote CFM
BS-PL30240	30"W x 24"D x 18"H	Stainless Steel	600 or 1200	300, 600 or 1200	1000 or 1400
BS-PL36240	36"W x 24"D x 18"H	Stainless Steel	600 or 1200	300, 600 or 1200	1000 or 1400
BS-PL42240	42"W x 24"D x 18"H	Stainless Steel	600 or 1200	300, 600 or 1200	1000 or 1400
BS-PL48240	48"W x 24"D x 18"H	Stainless Steel	1200	300, 600 or 1200	1000 or 1400
BS-PL54240	54"W x 24"D x 18"H	Stainless Steel	1200	300, 600 or 1200	1000 or 1400
BS-PL60240	60"W x 24"D x 18"H	Stainless Steel	1200	300, 600 or 1200	1000 or 1400
BS-PL66240	66"W x 24"D x 18"H	Stainless Steel	1200	300, 600 or 1200	1000 or 1400

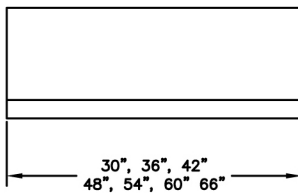
BLUESTAR® PRO-LINE HOOD SERIES

Standard Features

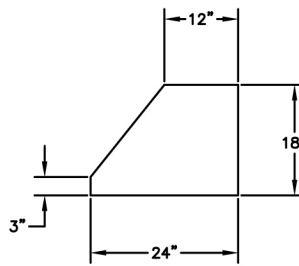
- Commercial grade 18 gauge 300 stainless steel construction
- Welded seamless construction
- 3-speed blower control
- Dishwasher safe stainless steel baffle filters
- Halogen lamps with dimmer control
- Reversible top or rear exhaust
- Largest filtered capture area in the industry



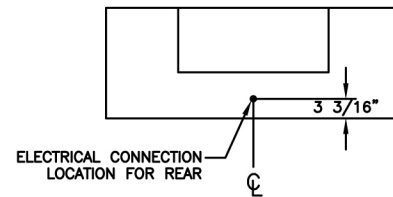
TOP VIEW



FRONT VIEW



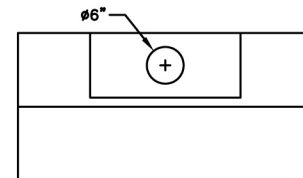
RT SIDE VIEW



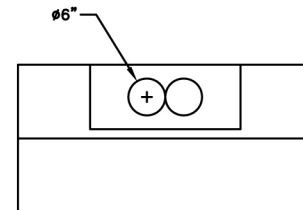
BACK VIEW

SPECIFICATIONS:

- 15 AMPS AT 120 VOLTS
- BLOWER 600 & 1200 CFM WITH VARIABLE CONTROL
- BLOWERS MUST BE PURCHASED SEPARATELY
- HALOGEN LIGHTS WITH DIMMER CONTROL
- RECTANGULAR 25 WATT HALOGEN



600 CFM BLOWER



1200 CFM BLOWER